

school for
social
entrepreneurs

Charles Rapson
Midlands Director

About SSE

- Started in 1997
- 9 Schools in the UK
- Schools in India, Canada, Australia & Ireland
- Support c1,000 Social Entrepreneurs a year globally
- 306 supported in the Midlands since 2013
- c£12 Social Return on Investment

About SSE

paid ambassadors

Standing Out

Understanding
Com

ALL ABOUT PEOPLE

Working
with unsuccessful
applicants

Ult
tec

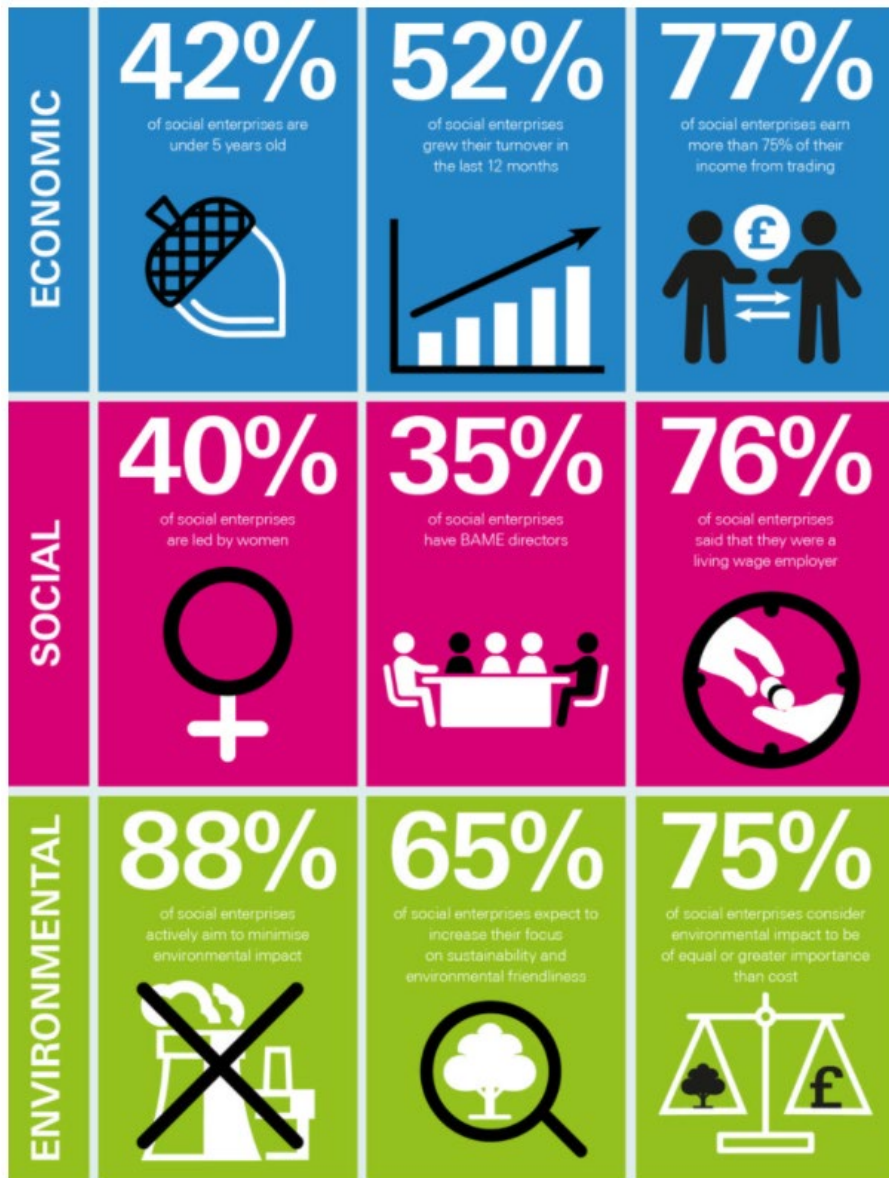
ent
re

UK Social Economy

- 100,000 SEs
- £60 billion to GDP
- 2 million employees

Report in 2017 for DCMS & BEIS included a further 371,000 'values driven' businesses

UK Social Economy



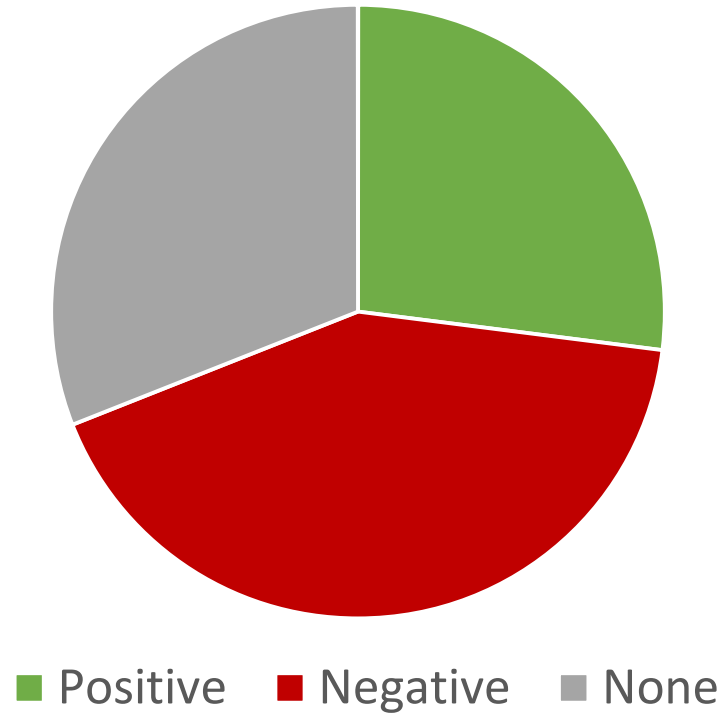
The Triple Bottom Line

- Economic
- Social
- Environmental

Covid-19 Impact

Survey of SSE Students & Fellows – Covid Impact

Covid Impact



Growing The Social Economy

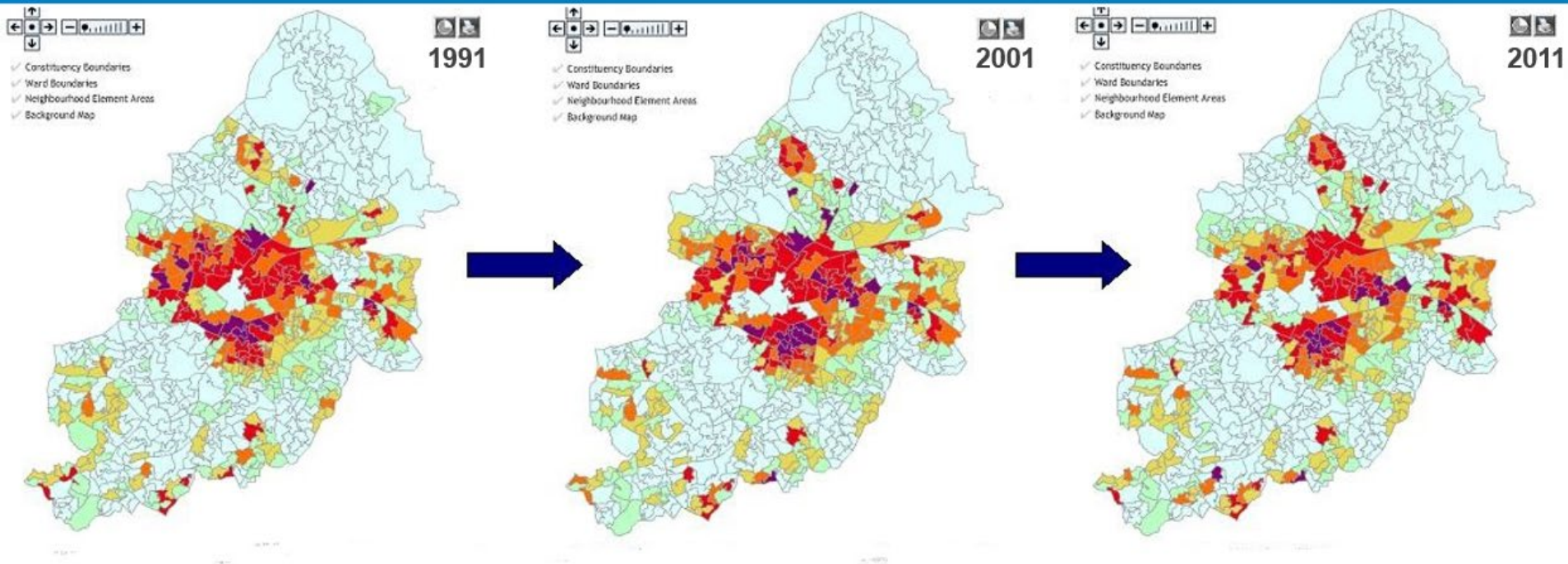
Report for WMCA identified an eco-system to support Social Economy Growth:

- Alignment of Key Public Policy Drivers
- Business Support
- Access to Finance & Investment
- Access to Markets
- Commissioning & Procurement
- Place-Based Development, Localities & Clusters
- Social Economy Marketing & Profile
- Partnerships
- Education, Awareness & Entrepreneurship
- Social Economy Sub-Sectors

WMCA committed to doubling the size of the Social Economy in 10 years

WMCA Commitment – Why?

Indices of Multiple Deprivation



Community Business Programme

- A 5 year programme in partnership with Power to Change
- 40 Community Businesses – 80 Participants in the Midlands
- 9 month duration experiential learning
- Match Trading Grant of £10,000



500+



64%

Community Business Programme

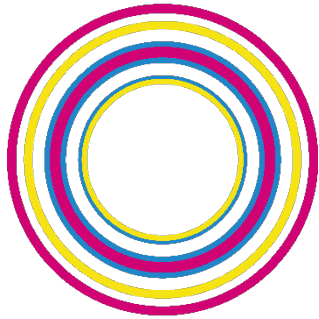
“Now we are in a much better position to run our community business in Derby. The information and knowledge we gained through the SSE programme has been transferred to our directors, volunteers and staff that all help to run improved trading activities as part of our Community Catering Business.”

Food & Education Enterprise, Derby



“The interactions with the other participants on the programme was of great benefit to me, being able to talk to other like-minded people who are trying to make a difference, to be able to work together to improve our businesses and organisations”

Leicester Community Benefit Society



school for social entrepreneurs

Email: Charles@ssemidlands.org
Tel: 07500 081 219
Twitter @ssemidlands
Web www.the-sse.org/resources/
YouTube www.youtube.com/c/The-sseOrg/featured